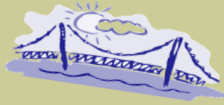


Region III Fall Family Conference: Building Bridges for Hope and Healing

Presented by:
Shepherd University
Pride Training
Program and WVDHHR



Workshop Overview

Friday:

Bridging the Gap

A panel discussion designed to help participants become more familiar with community resources.

Building a Safe Place Part I

An introduction to the topic of trauma and the impact it has on children in care.

Urgency for Permanency

Strategies for recruitment, developing support systems and minimizing placement disruptions.

Saturday:

Crossing the Bridge: Stories of Hope and Inspiration

Former foster children and parents will share their experiences.

Building a Safe Place Part II

(Attendance at Part I is NOT mandatory)

Trauma focused parenting

Healing Homes

Self Care and supports for those caring for children with special needs

- November 20th and 21st 2015
- 9am-4pm
- Bridgeport Conference Center
- Cost is \$15 for one day/
\$20 for both days
- (Reimbursement for foster families may be available through WVDHHR)

• Order of Events

Friday November 20

- 8:30: Registration
- 9:00: Bridging the Gap
- 12:00 Lunch
- 1:00 Break out Sessions
- A1: Building a Safe Place/
Trauma 101
- A2: Urgency for Permanency/
Building Strong Supports

• Saturday November 21

- 8:30: Registration
- 9:00: Crossing the Bridge
- 12:00: Lunch
- 1:00: Break Out Sessions
- BI: Building a Safe Place/Caring for the Traumatized Child
- B2: Healing Homes/
Creating Sanctuary
Among Chaos
- Lunch will be on your own both days. Light refreshments will be provided. CEU's for Social workers will be available.
- To register: Contact Angela Bender at 304-876-5308 or abender@shepherd.edu
- Child care is NOT available